



FPS Newsletter

Friday 6th September 2024

Notices & Information

Welcome back to the start of another academic year at Fullwood and back to school routines and procedures for the year. It has been wonderful to see all children back in school, settling into their new classes and getting to know the new adults in their classrooms. The school has been full of smiling faces this week and that is always the way we like to be! Children have been learning about their new learning journeys through the stunning starts in each phase group. Read on for a few reminders for the year ahead and things coming up next week.

Meet the Teacher

Now that children have started their new classes with their new teachers, we are going to hold some 'Meet the Teacher' meetings. The dates and times for these meetings are as follows:

- KS1 (Years 1&2) - Friday 13th September, 9.15-9.45am
- LKS2 (Years 3&4) - Friday 20th September, 9.15-9.45am
- UKS2 (Years 5&6) - Friday 27th September, 9.15-9.45am



These meetings will be held in school in the small hall. Presentations will be posted on the school website if you are unable to attend the meeting for your child.

Jeans for Genes day

Jeans for Genes Day is something that has become a 'must' for us at Fullwood. This year Jeans for Gene day will take place on **Friday 20th September**. Your child can wear jeans to school, with the usual school shirt and jumper and make a donation of 50p - £1 to help support Jeans for Genes day. Please send in donations in an envelope with your children.



MacMillan Coffee Morning

The first Coffee Morning happened in 1990. It was a small affair with a simple idea: guests would gather over coffee and donate the cost of their drink to Macmillan. It was so effective, we did it again the next year - only this time nationally.

Now Coffee Mornings come in all shapes and sizes. From small home gatherings to large corporate events; school fundraisers to a gathering with a local community group. They all have one thing in common - they raise vital funds to support the more than 3 million people in the UK living with cancer.

We would like to invite you all to a coffee afternoon in aid of Macmillan. It will take place on Friday 27th September 2024 from 2.15 until 3.30pm. We look forward to seeing you there.

New Environments

Over the summer holidays, we have had some development of our school environment. Some of you may have noticed the new reception play area with a brand new climbing frame! We can't wait to put this area to good use once our new reception children arrive. We have also refurbished our decking in the courtyard with a view to use the area more during the school day for outdoor lessons. All children in the school will be able to use this area. The Year 1 outdoor play area has also been updated with new resources for Year 1 children to support their transition from reception to Year 1. We have plans for plenty

more developments across the year, with a need to raise some money to support these projects, so watch this space and thank you in advance for your support.



Reminders

Our leadership team

There are no changes to our school's leadership team with Mr Ward as our Head of School; Mrs Bateman as Deputy Headteacher (with responsibility for Curriculum); Mrs Cilimkovic as our Assistant Headteacher (responsible for Inclusion) and Mrs Meek, as the School's Business Leader. The upper leadership team is completed by Mr Visvanathan, as Executive Headteacher, to Fullwood and the Oakdale Federation. As always, all of the leadership team are available before and after school in the playground.

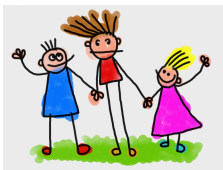
Communications

For any concerns or issues that you may have, please see your child's class teacher, in the first instance. In addition, each phase group has a member of the senior leadership team overseeing provision. They are also available to help or advise you as you need and are as follows:

- Early Years (Nursery & Reception) = Miss Jones (class 2)
- Key Stage 1 (Years 1 & 2) = Mr Sadler-Farmer (class 5)
- Lower Key Stage 2 (Years 3 & 4) = Miss Hall (class 10)
- Upper Key Stage 2 (Years 5 & 6) = Miss Ali (class 14)



Should you have any questions, worries or concerns and are unable to see our teachers during pick up or drop off times, please email the school office on admin.fullwood@redbridge.gov.uk or call the school office on 0208 551 3288. We will pass on your communications to our teachers.



Parent Support Advisor

Ms Thompson, the school's PSA, is always available to answer your questions. No matter how large or small, she will be able to either answer your question or guide you to somebody who can. Ms Thompson is on the playground every morning and afternoon and can be contacted by calling the school office.

Uniform & PE kits

Thank you to all parents for sending our children dressed so smartly in their new uniform. School uniforms are available from Carolinas and Unistat (Stores) or online at Myclothing.com . Click here for school website link.

<https://fullwoodprimary.co.uk/key-information/school-uniform/>



School colours – red, white and grey and may include grey pinafore dresses or skirts (No red polo shirts or black trousers/skirts). Jogging bottoms are no longer part of the school uniform (unless your child is in our nursery).

PE kits – Black shorts/ tracksuit bottoms/leggings, red t shirt, black sweatshirt/zip up jacket, plimsolls/trainers

Shoes – Black with fastenings that the child can do up themselves. Any laces should also be black.

*School uniforms should be **clearly labelled** with your child's name and if children wear trainers as part of their daily school uniform, these must be black and must be changed for PE.*

P.E. kit must be in school for all timetabled P.E lessons. All children require a suitable P.E. kit for indoor and outdoor use. Please ensure that all items are clearly named and provided in a suitable drawstring bag that can hang in the cloakroom. Children **must not** arrive dressed in PE kits on their PE day. PE bags may be taken home to be washed as often as you feel appropriate

Nut free school

A reminder that, due to having several pupils who have severe allergies to nuts, the school is a nut free school. Coming into contact with nuts, or even somebody who has eaten or touched nuts, could have life threatening consequences for these pupils so it is very important that we do not put them at risk by bringing any foods that contain nuts. These include foods such as Nutella, some cereal bars and some



cakes. If your child would like to bring in treats for their class on their birthday, please ensure they do not contain nuts (sweets, fruit drinks etc. are fine).

Other reminders

- **Burford Close restrictions** ~ Please note that Burford Close has been designated as a School Street by the Local Authority of Redbridge with restrictions put into place as to when cars can enter. **The restriction timings are 08.30 – 09.15 in the morning and 14.50 – 15.45 in the afternoon. Cars entering Burford Close during these two times will be sent a penalty charge notice (fine).**
- **Start times**~ We have a soft start from 8.50-9am during which time classroom doors are open and children can enter their classrooms. **All our gates open at 8.20am and will shut at 9.00am.** Children must not be left unattended in the playground if they arrive early and are waiting for the classroom doors to open. **Any child arriving after this time must come through the school office and be signed in by a parent.** If you are late more than once, you may receive a call from the Local Authority Education Welfare Officer who monitors our register. Thank you all for making a great start to the year with punctuality.
- **Jewellery and valuables**~ These should not be brought to school as we are unable to take responsibility for them. May I remind you that in consultation with religious leaders, the governors of the school support our policy of allowing only stud earrings and watches to be worn to school. However, these must be removed for PE and games. If earrings cannot be removed, please provide your child with micropore tape so that they can be covered.
- **Collection of children** ~ Please note that teaching ends at 3.30pm so it might be a few minutes after this time that your child leaves the building. Collections after 3.45pm will result in a £5 charge as children will be escorted to Shine club (our after school provision) and they will charge you for supervision of your child during this time.
- **Extended Holiday**~ A reminder that the London Borough of Redbridge has a zero tolerance on holiday leave. No request for extended holiday will be authorised. Your child is at risk of losing their place at Fullwood Primary and you are at risk of being fined. Our pupil attendance policy, which has been formulated in line with the Local Authority policy and has been ratified by the Governing Body, is available on request from the school office.



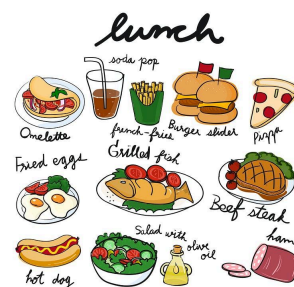
Extra-curricular clubs and activities

If you wish your child to attend Shine club, please remember to register your child online even if they have attended Shine club in the past. Extra curricular clubs will be up and running again in the next few weeks and we will write to you with details as opportunities for these arise.

Super School Meals

The Mayor of London has agreed to continue to provide Universal Free School Meals to all Primary age children to support families during the cost of living crisis we are experiencing. Children will order meals in the same way, but you do not have to top up your meals account. If you have paid into your ISS account already, please make contact with them directly to request a refund. Unfortunately this does not include Nursery age children.

Please remember, if you are in receipt of certain benefits your child could be eligible for Pupil Premium Free School Meals **which could be of benefit to you for a number of reasons and to the school for increased funds for resources** i.e. subsidised music lessons and food vouchers during the school holiday periods etc. We would ask that you take a look at the eligibility criteria below and if you think you are eligible please make an application even though you are in receipt of Universal Free School Meals.



The GOV.UK website explains that a child may be eligible for Pupil Premium free school meals (FSM) if their parents are in receipt of any of the following benefits:

- Income Support
- Income-based Jobseekers Allowance (JSA)
- Income-related Employment and Support Allowance (ESA)
- Support under part VI of the Immigration and Asylum Act 1999
- The guaranteed element of State Pension Credit
- Working Tax Credit run-on, which is paid for four weeks after you stop qualifying for Working Tax credit

- Universal Credit (provided you have an annual net earned income of no more than £7,400, as assessed by earnings from up to three of your most recent assessment periods)

If you believe your child is eligible for free school meals, please approach the Parent Support Advisor who will be happy to help you with your application. You can also check yourself by following the link below and entering your details.

<https://www.redbridge.gov.uk/schools/free-school-meals/>

Support for Parents

Please see attached a poster for an upcoming Financial Capability client workshop. The event will be held in person at Jubilee Church Ilford, 14 Granville Road, Ilford, IG1 4JY on Friday 13th September 2024 between 12:30-14:00.

The topic for this workshop is 'Dealing with Debt'. The workshop will cover how to identify priority and non-priority debts, checking debt liability and finding solutions to debt.

If you would like to attend, please scan the QR code on the poster and complete the mandatory fields, such as email address, name and whether they have used the services of RFB before.



Upcoming Dates

DATE	EVENT
Monday 9th September 2024	<ul style="list-style-type: none"> • First reception intake - summer born to start today - until 12.30pm • Reception and nursery home visits continue this week
Tuesday 10th September 2024	<ul style="list-style-type: none"> • Horse Riding at Chigwell Riding Trust for some children - details have been given to those children involved.
Wednesday 11th September 2024	<ul style="list-style-type: none"> • Second reception intake - spring born to start today - until 12.30pm
Friday 13th September 2024	<ul style="list-style-type: none"> • Meet the teacher - KS1 (yrs 1&)
Friday 20th September 2024	<ul style="list-style-type: none"> • Meet the Teacher - LKS2 (yrs 3&4)
Friday 23rd september 2024	<ul style="list-style-type: none"> • Reception children start full time
Friday 27th September 2024	<ul style="list-style-type: none"> • Meet the Teacher - UKS2 (yrs 5&6) • Flu vaccinations - Reception to Year 6 - more details for registration and vaccine information to follow • MacMillan coffee afternoon - 2.25-3.30pm